

**Features:**

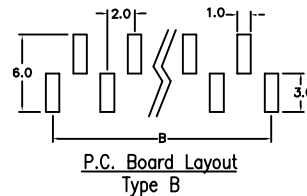
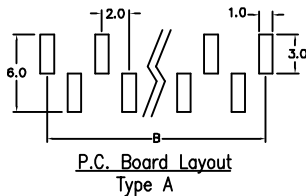
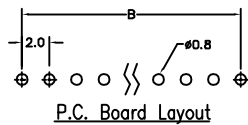
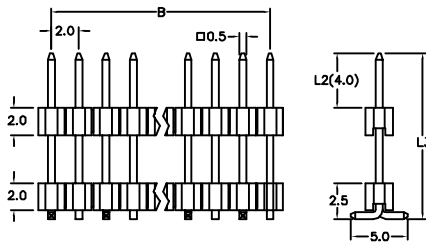
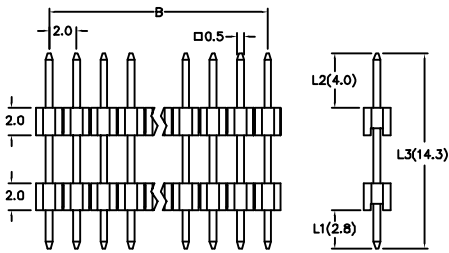
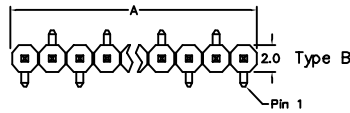
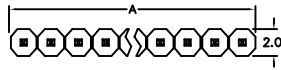
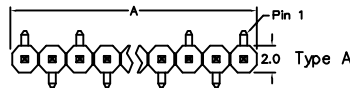
- \* Low profile insulator 2.00mm(0.079")
- \* Available in both Single and Double row.
- \* Available in Straight.
- \* Dual insulator offers high versatility and stability.

**Material:**

**Housing:** 30% Glass filled PBT UL94V-0 for DIP Type.  
 High temperature housing withstands IR and VPR soldering methods For SMD Type.  
**Contacts:** Brass.  
**Plating:** Gold plated over nickel.  
 Tin plated over nickel.

**Electrical Characteristics:**

**Current Rating:** 1 AMP.  
**Insulator Resistance:** 5000MΩmin. at DC 500V.  
**Contact Resistance:** 20mΩmax. at DC 100mA.  
**Operating Temperature:** -55°C~+105°C For DIP Type.  
 -65°C~+125°C For SMD Type.  
**Max Processing Temperature:** 230°C for 30~60 seconds.



Position	2 Thru 40
Dimension	
A	2.0 X No. of Positions
B	2.0 X No. of Positions -2.0

**Ordering information**

PH14- 1 40 1 1 A /L1 /L2 /L3  
 Series 1: Single Row No.of 1: Gold Plated 1: Straight A: Type A Foot Print  
 Pin Per Row 2: Tin Plated 3: S.M.D Type B: Type B Foot Print  
 Custom Design: Straight (i.e. PH14-14011/L1 /L2 /L3)  
 Surface mount (i.e. PH14-14013A/L2 /L3)